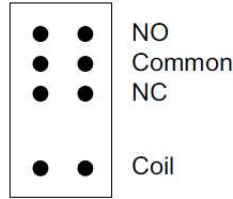
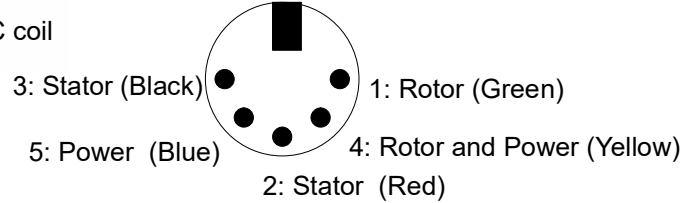


Reverse unit works on AC, DC, and AC/DC.



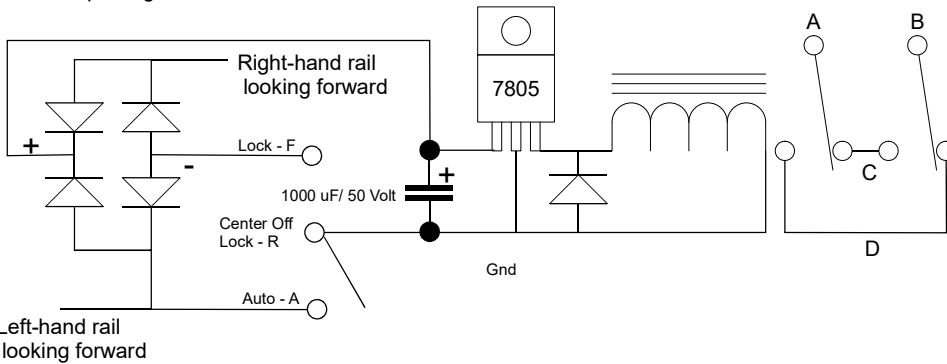
OMRON G2R-2
Relay with 5 V DC coil

5 Pin DIN
Female Connector



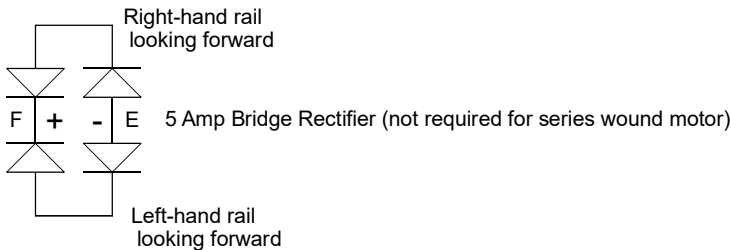
With switch in Auto mode train travels
Forward when provided AC power or
DC if the Positive Rail is on the right looking forward
Reverse when provided DC power and
the Positive Rail is on the Left looking forward

1 Amp Bridge Rectifier



Series Wound Motor
Forward: 5-2 and 1-3
Reverse: 5-3 and 1-2

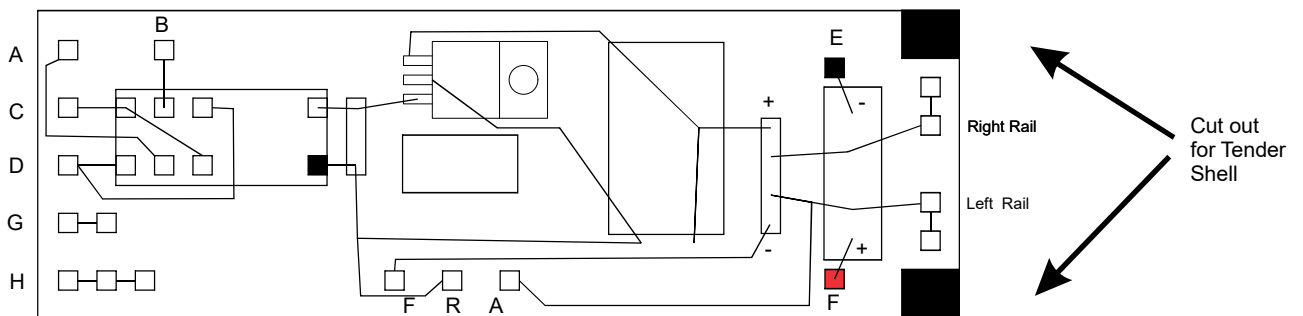
- 1 = A
- 2 = C
- 3 = D
- 4 = G = Right Rail
- 5 = H = B = Left Rail



DC Can Motor
Forward: 5 positive, 4 negative
Reverse: 5 negative, 4 positive

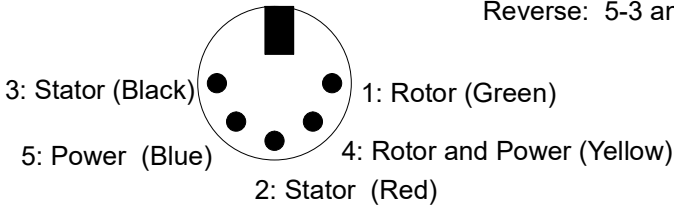
- 1, 2, 3 = NC
- 4 = C
- 5 = D
- A = F
- B = E

1.6 by 4.8



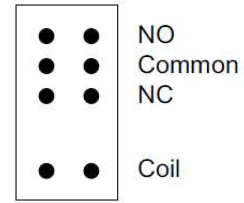
5 Pin DIN
Female Connector

Forward: 5-2 and 1-3
Reverse: 5-3 and 1-2

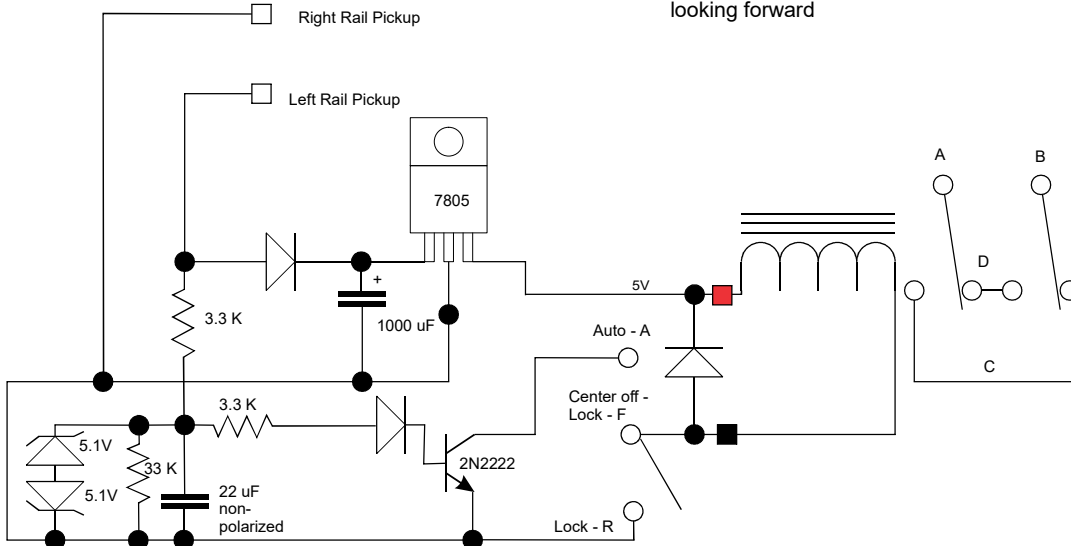
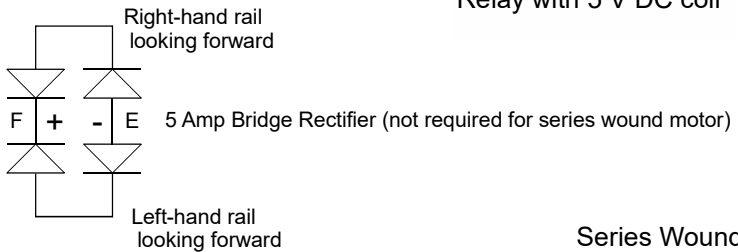


Reverse unit works on AC, DC, AC/DC and with Railsounds Controller.

With switch in Auto mode train travels Forward when provided AC power or DC if the right rail is +.
With switch in Auto mode train travels Reverse when provided DC if the right rail is -.



OMRON G2R-2
Relay with 5 V DC coil



Series Wound Motor
Forward: 5-2 and 1-3
Reverse: 5-3 and 1-2

1 = A
2 = C
3 = D
4 = G = Right Rail
5 = H = B = Left Rail

DC Can Motor
Forward: 5 positive, 4 negative
Reverse: 5 negative, 4 positive

1, 2, 3 = NC
4 = C
5 = D
A = F
B = E

1.6 by 3.6

